

**VIOLA PARK**  
Bagno a Ripoli  
FLORENCE  
**May 31<sup>st</sup>**  
**2025**

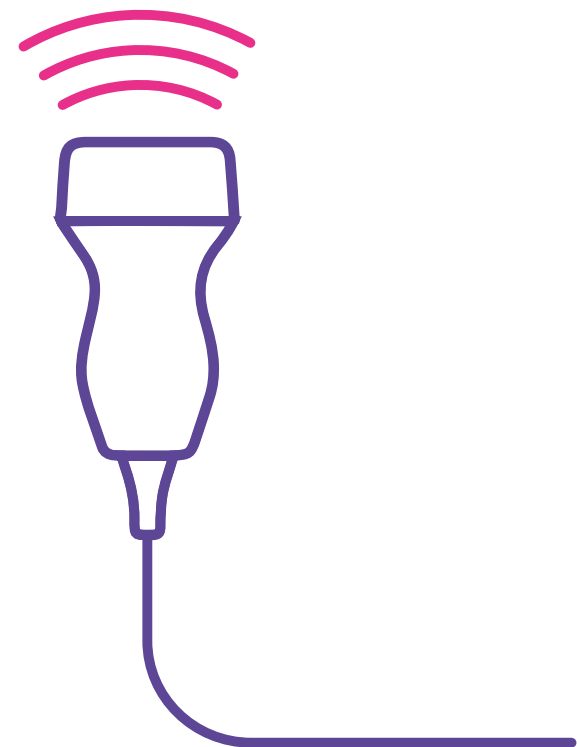
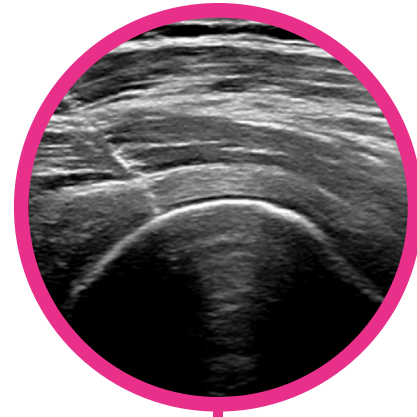


## ***INFILTRATION TECHNIQUES***

# ***Approach to ultrasound guided infiltration therapy of the lower limb and device***

*Practical Course  
Ultrasound guided  
infiltration on volunteers*





# *Infiltration Techniques*

## *Course Objectives and Program*

Practical course in musculoskeletal ultrasound dedicated to the graduates in Medicine and Surgery who are experts in Ultrasound and Sports Medicine.

The objective of this course is to learn the correct approach to the study of the joints and the muscle-tendon district with ultrasound.

The correct ultrasound-guided infiltration method is essential for treating sports or joint traumas and evaluating the distribution of the device in the target point to be treated.

The course is limited to a maximum of 30 students.

Each ultrasound machine will be used by a maximum of 4 students who will try, under the guidance of a tutor, the technique and infiltration procedure of joints, tendons, perineurium and nerves involved in sports injuries.

The infiltrative procedure technique will be performed on animal support and, subsequently, on volunteers after having approached the sonoanatomy of the district under examination.

## *Live infiltration execution*

The students will be divided in groups of 4 people.

For all 10 topics, we will lot one person from each group to carry out the infiltration live, assisted by a tutor.

To this end, after the enrollment is complete, students are invited to send the documentation that will be requested by the organization in order to request authorization from the competent authority.



# Approach to infiltrative therapy and notes on the use of the devices.

## Live infiltration

**Tutors: S. Giannini (ITA), N. Gori (ITA), S. Natale (ITA), L. Pengue (ITA)**

8.00	Registration
8.30	<b>Course Introduction.</b> Use of the ultrasound. Informed consent and necessary equipment
8.50	<ul style="list-style-type: none"><li>• <b>Groin region</b></li><li>• <b>Abdominal Wall</b></li><li>• <b>Sonoanatomy muscles and surroundings</b> Infiltrative approach Practical tests</li></ul>
9.30	<ul style="list-style-type: none"><li>• <b>Hip</b> Sonoanatomy and infiltrative technique Practical tests</li></ul>
10.10	<ul style="list-style-type: none"><li>• <b>Anterior thigh</b> Sonoanatomy and infiltrative technique Practical tests</li></ul>
10.50	Coffee Break
11.10	<ul style="list-style-type: none"><li>• <b>Posterior thigh</b> Sonoanatomy and infiltrative technique Practical tests</li></ul>
12.00	INFILTRATION PRACTICE ON VOLUNTEERS AND ANIMAL SUPPORT

13.30	Light lunch
14.30	Viola Park center visit
15.10	<ul style="list-style-type: none"><li>• <b>Knee - popliteal region</b> Sonoanatomy and infiltrative technique Practical tests</li></ul>
15.40	<ul style="list-style-type: none"><li>• <b>Posterior Leg</b> Sonoanatomy and infiltrative technique Practical tests</li></ul>
16.10	<ul style="list-style-type: none"><li>• <b>Ankle</b> Sonoanatomy and infiltrative technique Practical tests</li></ul>
16.40	<ul style="list-style-type: none"><li>• <b>TAchilles tendon - Plantar fascia</b> Sonoanatomy and infiltrative technique Practical tests</li></ul>
17.00	INFILTRATION PRACTICE ON VOLUNTEERS AND ANIMAL SUPPORT
18.30	CME questionnaire
19.00	Conclusion

## General Information

Venue

## Viola Park

Via Pian di Ripoli 5,  
50012 Bagno a Ripoli (FI)

## Registration

The course requires payment and is limited to 30 participants.

Registraton includes:

- **conference kit**
- **Active participation**
- **certificate of attendance**
- **CME certificate (to those entitled)**
- **coffee break**
- **light lunch**
- **Practical tests and material for practical tests**

You can register at the following link:

[https://eventi.eve-lab.com/congresso.php?id\\_congresso=136](https://eventi.eve-lab.com/congresso.php?id_congresso=136)

*CME credits*

Provider 5306

EVE-LAB FORMAZIONE SRL

Id Evento: 5306 –

Crediti assegnati: 10,4

The course will be accredited by the National Commission for Continuing Education for the following professional figures/disciplines:

- Medical Doctor: all disciplines

The credit certification is subject to participation to the entire course, the completion of the evaluation and learning questionnaires and the suitability of the profession and discipline of the participant with the event.

## NOTES

[illegible]

## Scientific Committee

*Silvana Giannini*

*Luca Pengue*

## Speakers

*Silvana Giannini*

*Niccolò Gori*

*Salvatore Massimo Natale*

*Luca Pengue*

*Donato Vassalli*

With the unconditional contribute of



## Organizing Secretariat



EVE-LAB FORMAZIONE S.R.L

Viale dei Mille, 137

50131 Firenze

Email: [cristina.unitulli@eve-lab.it](mailto:cristina.unitulli@eve-lab.it)

Tel. 055 0671000

[www.eve-lab.com](http://www.eve-lab.com)